

**Tillbridge Solar Project  
EN010142**

**Volume 6  
Environmental Statement  
Figure 8-5: Historic Landscape  
Characterisations  
Document Reference: EN010142/APP/6.3**

**Regulation 5(2)(a)  
Infrastructure Planning (Applications: Prescribed Forms and  
Procedure) Regulations 2009**

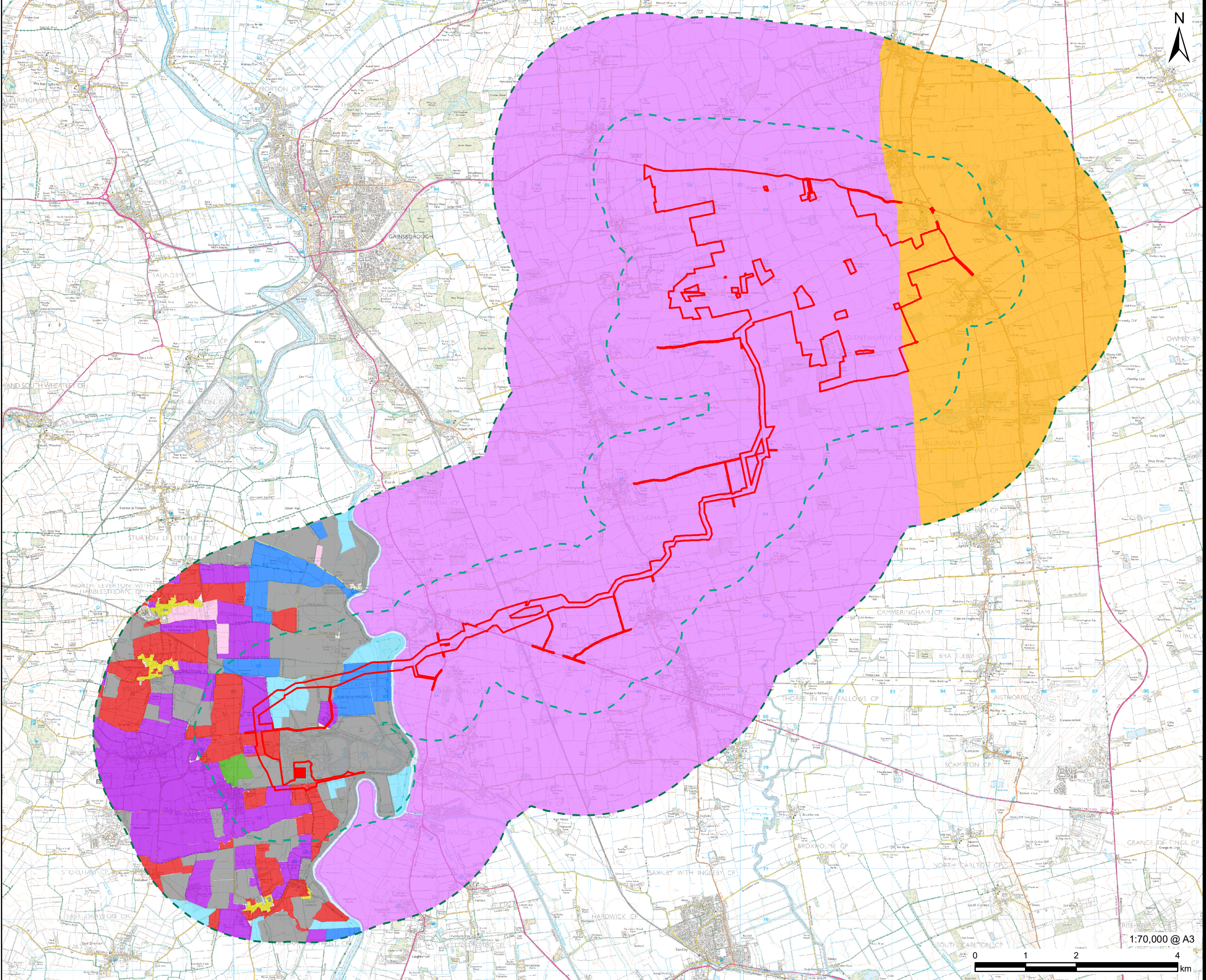
**April 2024  
Revision Number: 00**

**tillbridgesolar.com**

---



Revision: 0 Drawn: HW Checked: LL Approved: CW Date: 2024-02-09  
Filename: lna.aecomnet.com\fs\EMEALondon-UK\KLN06\Legacy\UKLON06\PPSW001-V1\DP\Library\GIS\_DATA\Projects\Greta III\Layout\Tillbridge Solar\ES\Chapter 8 - Heritage\03 1128\_TillbridgeSolar\_Heritage\_Figure 8-5\_HLC.mxd



**PROJECT**  
Tillbridge Solar Project

**CLIENT**  
Tillbridge Solar Ltd

**CONSULTANT**  
Aldgate Tower  
2, Leman Street  
London, E1 8FA  
United Kingdom  
T +44-0207-645-2000

- LEGEND**
- Order limits
  - 1km Buffer
  - 3km Buffer
  - Cotnam Power Station

**Historic Landscape Characterisation (Notts) - Type**

- Irregular Geometric Field Patters
- Major Historic Settlement
- Parks and Gardens
- Patterns Reflecting Open Fields
- Patterns of Fossilised Open Fields
- Regularly laid out large geometric field patterns
- Semi-regular field patterns
- Urban areas

**Historic Landscape Characterisation (Lincs) - Type**

- The Northern Cliff
- The Trent Valley

**NOTES**  
Contains Ordnance Survey Data © Crown Copyright and database right 2024. Ordnance Survey 0100031673  
© Historic England 2023. Contains Ordnance Survey data © Crown copyright and database right 2023. The Historic England GIS Data contained in this material was obtained in 2023.  
Historic Landscape Characterisations were sourced from Lincs and Notts councils, 2023.

**ISSUE PURPOSE**  
DCO Submission  
**PROJECT NUMBER**  
60677969

**FIGURE TITLE**  
Historic Landscape Characterisations

**FIGURE NUMBER**  
Figure 8-5